

Energy Development Services

- Project Planning (oil, gas, uranium, and wind development)
- Surveying (topographic, boundary, platting, and construction)
- Facility Design
- GIS Mapping
- Storm Water Management and Design
- Environmental Impact Statement Preparation
- Environmental Assessment Preparation
- Geotechnical Drill Logging and Sampling
- Road Design
- Well Pad Design
- Materials Sampling and Testing
- Construction Administration



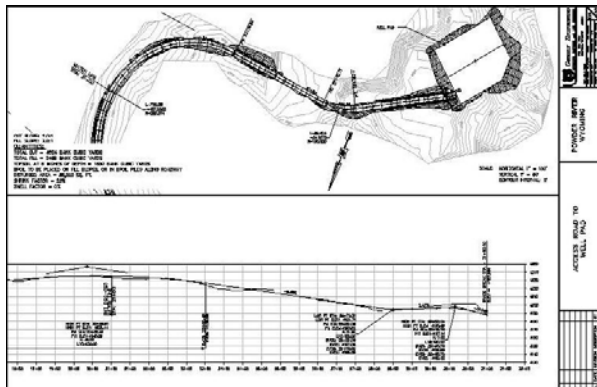
COAL BED METHANE WELL LOCATION
Johnson County, Wyoming

Energy development is an essential part of the economy of Wyoming and neighboring states. Nelson Engineering has been providing services in the energy development field throughout this region for over 30 years. Our experience and expertise serve our clients well and are more necessary than ever given the growing and changing regulatory requirements of the Bureau of Land Management (BLM) and other state and federal agencies.

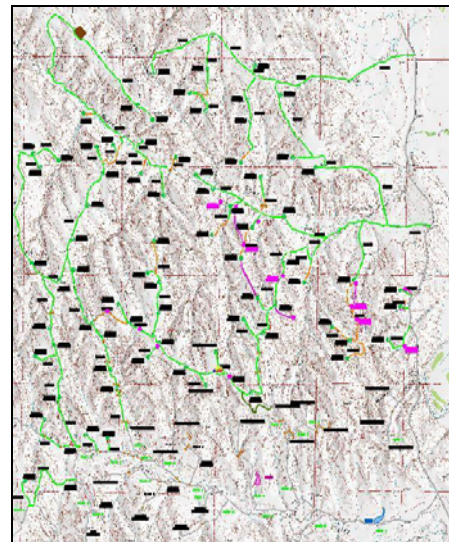
Our approach is to work closely with our clients and the regulatory agencies to ensure an on-time, cost-effective, and successful project. In conducting our work, we utilize the latest in design, surveying, and GIS equipment and software.



Methane Wells
Powder River Basin, Wyoming



TYPICAL WELL PAD ACCESS PLAN AND PROFILE
Powder River Basin, Wyoming



TYPICAL "POD" MAP
Powder River Basin, Wyoming